

PARTS MANUAL

Hydra-Cell[®]

INDUSTRIAL PUMPS

MODELS: C-22, C-23, C-24

Bypass Pressure Regulating Valves

IMPORTANT

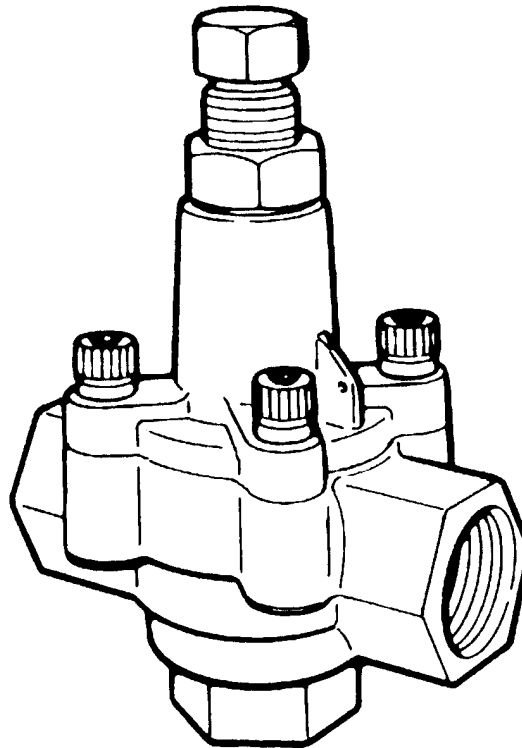
Record your pump model number and serial number here for easy reference:

Model No. _____

Serial No. _____

Date of Purchase _____

When ordering parts or making inquiries about this pump, please mention the model and serial numbers.



WANNER ENGINEERING, INC.

1204 Chestnut Avenue, Minneapolis, MN 55403

TEL: (612) 332-5681 FAX: (612) 332-6937

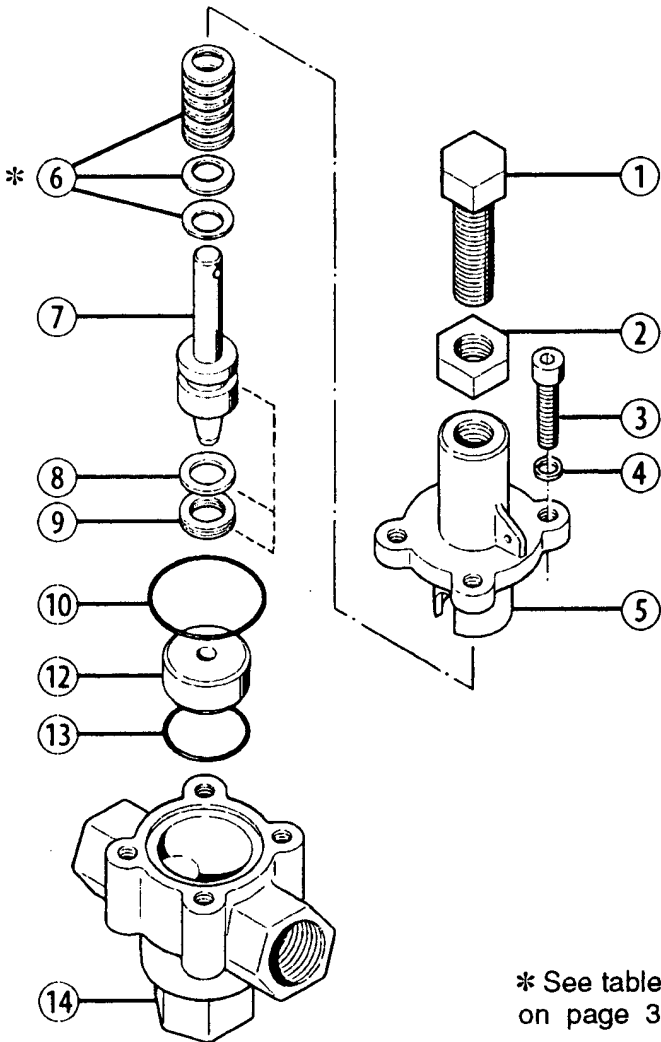
TOLL-FREE FAX [US only]: (800) 332-6812

www.hydra-cell.com

email: sales@wannereng.com

Document Fax Back System (510) 745-0440

C-22/C-23/C-24 Bypass Pressure Valves



* See table on page 3.

C22 Brass

Ref #	Part Number	Description	Quantity/ Pump
1	C22-004-1000	Adjusting Bolt	1
2	C22-005-1000	Jam Nut	1
3	C22-015-2000	Cap Screw, 5/16 x 1"	4
4	C22-014-2000	Lock Washer, 5/16"	4
5	C22-003-1000	Body, top, brass	1
6	C22-018-3100	Spring Disc, 20 x 10.2 x 1.2 mm	*
	C22-018-3101	Spring Disc, 20 x 10.2 x 0.8 mm	*
	C22-018-3102	Spring Disc, 20 x 10.2 x 1.5 mm	*
7	C22-023-1100	Plunger Assembly, 316 SST	1
	C22-023-1101	Plunger Assembly, SST, with tung, carb, ball	1
	C22-023-1103	Plunger Assembly, 17-4 PH SST	1
	C22-023-1117	Plunger Assembly, Hastelloy C-276 ..	1
8	C22-013-2110	Seal, back-up, Buna	1
	C22-013-2118	Seal, back-up, Teflon	1
9	C22-012-2110	Seal, Buna	1
	C22-012-2111	Seal, Viton	1
	C22-012-2113	Seal, EPDM	1
10	C22-011-2110	O-Ring, body, Buna	1
	C22-011-2111	O-Ring, body, Viton	1
	C22-011-2113	O-Ring, body, EPDM	1
12	C22-006-1000	Seat, 316 SST	1
	C22-006-1001	Seat, 17-4 HT	1
	C22-006-1002	Seat, tungsten carbide	1
	C22-006-1017	Seat, Hastelloy C-276	1
13	C22-010-2110	O-ring, valve seat, Buna	1
	C22-010-2111	O-ring, valve seat, Viton	1
	C22-010-2113	O-ring, valve seat, EPDM	1
14	C22-002-1000	Body, valve, brass, NPT	1
-	C22-022-2400	Name Plate (specify model & serial no.)	1

C22 Stainless Steel (see page 4)

C23 Brass

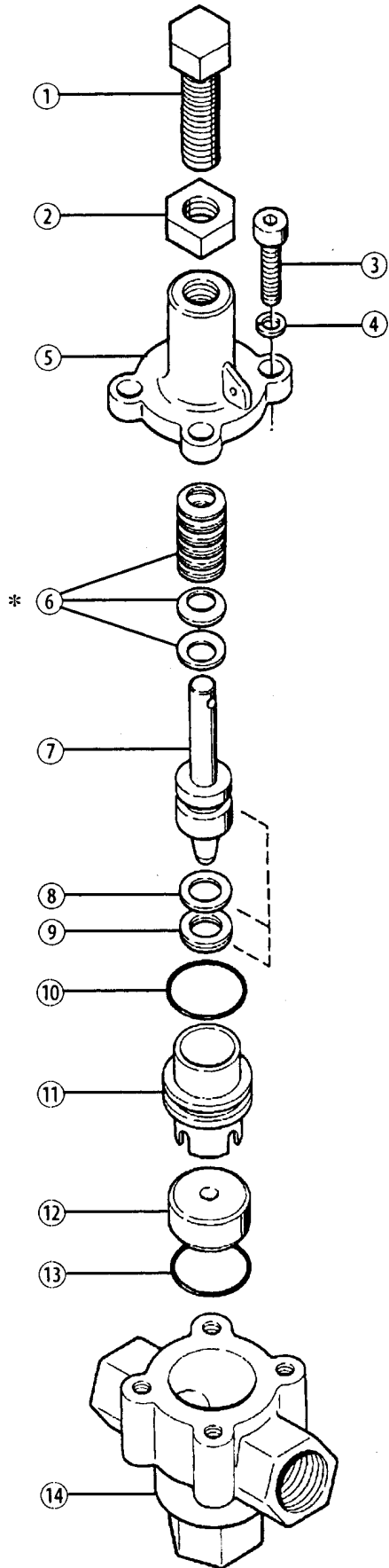
Ref #	Part Number	Description	Quantity/ Pump
1	C23-004-1000	Adjusting Bolt	1
2	C23-005-1000	Jam Nut	1
3	D25-029-2010	Cap Screw, 3/8" x 1-1/4"	4
4	D10-048-2010	Lock Washer	4
5	C23-003-1000	Body, top, brass	1
6	C23-018-3100	Spring Disc, 28 x 12.2 x 1.5 mm	*
	C23-018-3101	Spring Disc, 28 x 12.2 x 1.0 mm	*
7	C23-023-1100	Plunger Assembly, 316 SST	1
	C23-023-1101	Plunger Assembly, SST, with tung. carb. Ball	1
	C23-023-1103	Plunger Assembly, 17-4 PH SST	1
7	C23-023-1117	Plunger Assembly, Hastelloy C-276 ..	1
8	C23-013-2110	Seal, back-up, Buna	1
	C23-013-2118	Seal, back-up, Teflon	1
9	C23-012-2110	Seal, Buna	1
	C23-012-2111	Seal, Viton	1
	C23-012-2113	Seal, EPDM	1
10	C23-011-2110	O-Ring, body, Buna	1
	C23-011-2111	O-Ring, body, Viton	1
	C23-011-2113	O-Ring, body, EPDM	1
12	C23-006-1000	Seat, 316 SST	1
	C23-006-1001	Seat, 17-4 HT	1
	C23-006-1002	Seat, tungsten carbide	1
	C23-006-1017	Seat, Hastelloy C-276	1
13	C23-010-2110	O-ring, valve seat, Buna	1
	C23-010-2111	O-ring, valve seat, Viton	1
	C23-010-2113	O-ring, valve seat, EPDM	1
14	C23-002-1000	Body, valve, brass, NPT	1
-	C23-022-2400	Name Plate (specify model & serial no.)	1

C23 Stainless Steel (see page 4)

C24 All Models

Ref #	Part Number	Description	Quantity/ Pump
1	C24-004-1000	Adjusting Bolt	1
2	C24-005-1000	Jam Nut	1
3	C24-015-2000	Cap Screw, 7/16 x 1-1/2"	4
4	C24-014-2000	Lock Washer, 7/16"	4
5	C24-003-1000	Body, top, brass	1
	C24-003-1001	Body, top, 316 SST	1
	C24-003-1002	Body, top, nickel alloy C series	1
6	C24-018-3100	Spring Disc, 35.5 x 18.3 x 2.0 mm	*
	C24-018-3102	Spring Disc, 35.5 x 18.3 x 1.2 mm	*
7	C24-023-1100	Plunger Assembly, 316 SST	1
	C24-023-1101	Plunger Assembly, SST, with tung, carb. Ball	1
	C24-023-1102	Plunger Assembly, Hastelloy C-276 ..	1
	C24-023-1103	Plunger Assembly, 17-4 PH SST	1
8	C24-013-2110	Seal, back-up, Buna	1
	C24-013-2118	Seal, back-up, Viton	1
9	C24-012-2110	Seal, Buna	1
	C24-012-2111	Seal, Viton,	1
	C24-012-2113	Seal, EPDM	1
10	C24-011-2110	O-Ring, body, Buna	1
	C24-011-2111	O-Ring, body, Viton	1
	C24-011-2113	O-ring, body, EPDM	1
12	C24-006-1000	Seat, 316 SST	1
	C24-006-1001	Seat, 17-4 HT	1
	C24-006-1002	Seat, tungsten carbide	1
	C24-006-1003	Seat, Hastelloy C-276	1
13	C23-010-2110	O-ring, valve seat, Buna	1
	C23-010-2111	O-ring, valve seat, Viton	1
	C23-010-2113	O-ring, valve seat, EPDM	1
14	C24-002-1000	Body, valve, brass, NPT	1
	C24-002-1001	Body, valve, 316 SST, NPT	1
	C24-002-1002	Body, valve, nickel alloy C series, NPT	1
-	C24-022-2400	Name Plate (specify model & serial no.)	1

C-22/C-23/C-24 Bypass Pressure Valves



C22 Stainless Steel

Ref #	Part Number	Description	Quantity/ Pump
1	C22-004-1000	Adjusting Bolt	1
2	C22-005-1000	Jam Nut	1
3	C22-015-2000	Cap Screw, 5/16 x 1"	4
4	C22-014-2000	Lock Washer, 5/16"	4
5	C22-003-1002	Body, top, nonwetted	1
	C22-018-3100	Spring Disc, 20 x 10.2 x 1.2 mm	*
6	C22-018-3101	Spring Disc, 20 x 10.2 x 0.8 mm	*
	C22-018-3102	Spring Disc, 20 x 10.2 x 1.5 mm	*
7	C22-023-1000	Plunger Assembly, 316 SST	1
	C22-023-1001	Plunger Assembly, SST, with tung. Carb. Ball	1
	C22-023-1003	Plunger Assembly, 17-4 PH SST	1
	C22-023-1007	Plunger Assembly, Hastelloy C-276 ..	1
8	C22-013-2110	Seal, back-up, Buna	1
	C22-013-2118	Seal, back-up, Teflon	1
9	C22-012-2110	Seal, Buna	1
	C22-012-2111	Seal, Viton	1
	C22-012-2113	Seal, EPDM	1
10	C22-016-2110	O-Ring, body, Buna	1
	C22-016-2111	O-Ring, body, Viton	1
	C22-016-2113	O-Ring, body, EPDM	1
11	C22-024-1010	Sleeve, 316 SST	1
	C22-024-1017	Sleeve, Hastelloy C-276	1
12	C22-006-1000	Seat, 316 SST	1
	C22-006-1001	Seat, 17-4 HT	1
	C22-006-1002	Seat, tungsten carbide	1
	C22-006-1017	Seat, Hastelloy C-276	1
13	C22-010-2110	O-ring, valve seat, Buna	1
	C22-010-2111	O-ring, valve seat, Viton	1
	C22-010-2113	O-ring, valve seat, EPDM	1
14	C22-002-1002	Body, valve, 316 SST, NPT	1
	C22-002-1017	Body, valve, nickel alloy C series NPT1	
-	C22-022-2400	Name Plate (specify model & serial no.)	1

C23 Stainless Steel

Ref #	Part Number	Description	Quantity/ Pump
1	C23-004-1000	Adjusting Bolt	1
2	C23-005-1000	Jam Nut	1
3	D25-029-2010	Cap Screw, 3/8 x 1-1/4"	4
4	D10-048-2010	Lock Washer, 3/8"	4
5	C23-003-1002	Body, top. Nonwetted	1
6	C23-018-3100	Spring Disc, 28 x 12.2 x 1.5 mm	*
	C23-018-3101	Spring Disc, 28 x 12.2 x 1.0 mm	*
7	C23-023-1100	Plunger Assembly, 316 SST	1
	C23-023-1101	Plunger Assembly, SST, with tung. Carb. Ball	1
	C23-023-1103	Plunger Assembly, 17-4 PH SST	1
	C23-023-1117	Plunger Assembly, Hastelloy C-276 ..	1
8	C23-013-2110	Seal, back-up, Buna	1
	C23-013-2118	Seal, back-up, Teflon	1
9	C23-012-2110	Seal, Buna	1
	C23-012-2111	Seal, Viton	1
	C23-012-2113	Seal, EPDM	1
10	C23-016-2110	O-Ring, body, Buna	1
	C23-016-2111	O-Ring, body, Viton	1
	C23-016-2113	O-Ring, body, EPDM	1
11	C23-024-1010	Sleeve, 316 SST	1
	C23-024-1017	Sleeve, Hastelloy C-276	1
12	C23-006-1000	Seat, 316 SST	1
	C23-006-1001	Seat, 17-4 HT	1
	C23-006-1002	Seat, tungsten carbide	1
	C23-006-1017	Seat, Hastelloy C-276	1
13	C23-010-2110	O-ring, valve seat, Buna	1
	C23-010-2111	O-ring, valve seat, Viton	1
	C23-010-2113	O-ring, valve seat, EPDM	1
14	C23-002-1002	Body, valve, 316 SST, NPT	1
	C23-002-1017	Body, valve, nickel alloy C series, NPT	1
-	C23-022-2400	Name Plate (specify model & serial no.)	1

C24 All Models (see page 3)



WANNER ENGINEERING, INC.

1204 Chestnut Avenue, Minneapolis, MN 55403
TEL: (612) 332-5681 FAX: (612) 332-6937
TOLL-FREE FAX [US only]: (800) 332-6812

www.hydra-cell.com

email: sales@wannereng.com

Document Fax Back System (510) 745-0440